



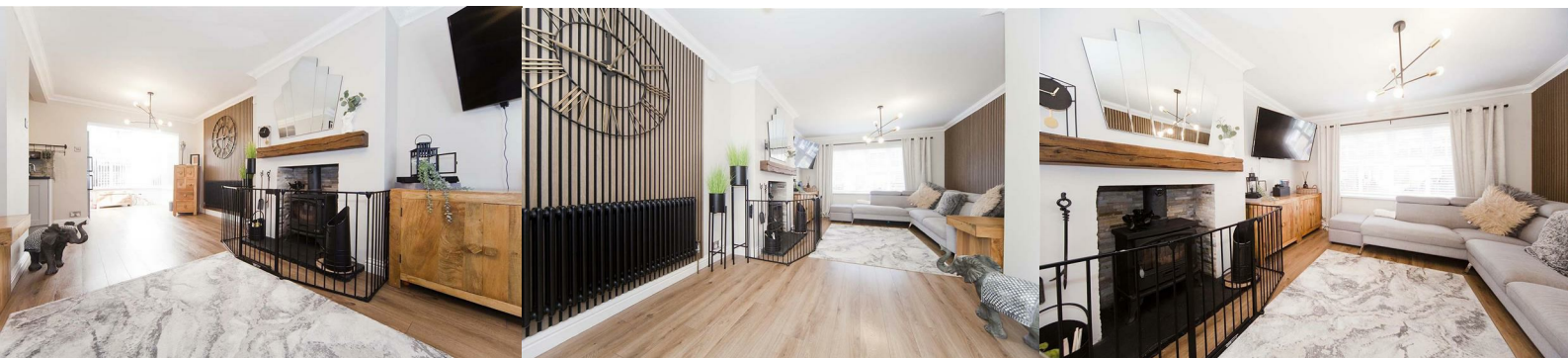
35 Berwick Street

, Hartlepool, TS25 1BW

£147,500



Igomove take pleasure in listing this extended three bedroomed mid terraced house situated in the coastal resort of Seaton Carew, located within strolling distance to a myriad of amenities, this lovely home also offers; three immaculate bedrooms, modern bathroom, large lounge/diner, sunny conservatory, impeccable newly installed kitchen, inviting entrance hall, low maintenance gardens, on street parking, garage, Upvc double glazing, gas central heating, immaculate decor, freehold.



Well presented frontage, on street parking, garage, walled low maintenance garden with wrought iron railings and gated access, porch entry.

Inviting entrance hall with stairs to the first floor, tiled flooring, immaculate decor.

Excellent kitchen recently fitted with a selection of shaker style wall, base and drawer cabinets, complimentary surfaces, stylish tiled backsplash, inset sink with American style jet swivel mixer tap, plumbing for washing machine, integrated double oven, integrated hob, integrated extractor, laminate flooring.

Spacious open plan lounge diner with window to the front of the property with feature open fireplace, cast log dual fuel burner, slate hearth and wooden over mantle, laminate flooring, anthracite radiators, contemporary decor, decorative coving, and open plan to;

Sunny conservatory with door opening to the rear garden, laminate flooring, fitted blinds.

To the first floor;

Bedroom one is a large rear aspect double with fitted wardrobes and fitted storage cupboard, immaculate decor.

Bedroom two is a double situated to the front of the property, impeccable decor.

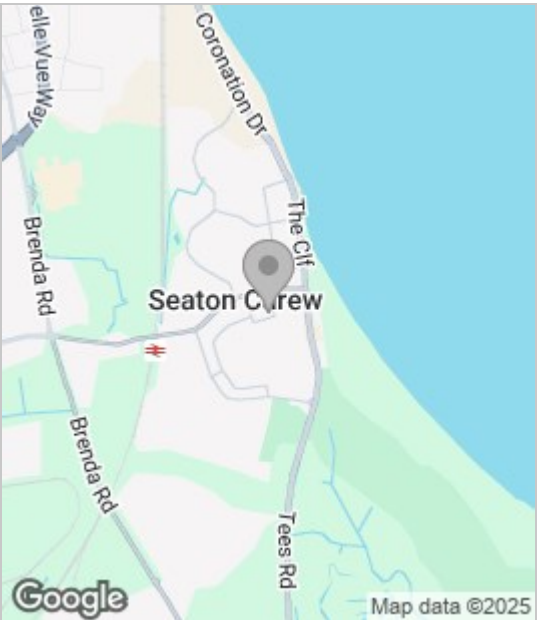
Bedroom three is a single with window to the front elevation, pristine decor.

The family bathroom comprises bath, over bath shower, close coupled WC and pedestal wash basin, complimentary tiling.

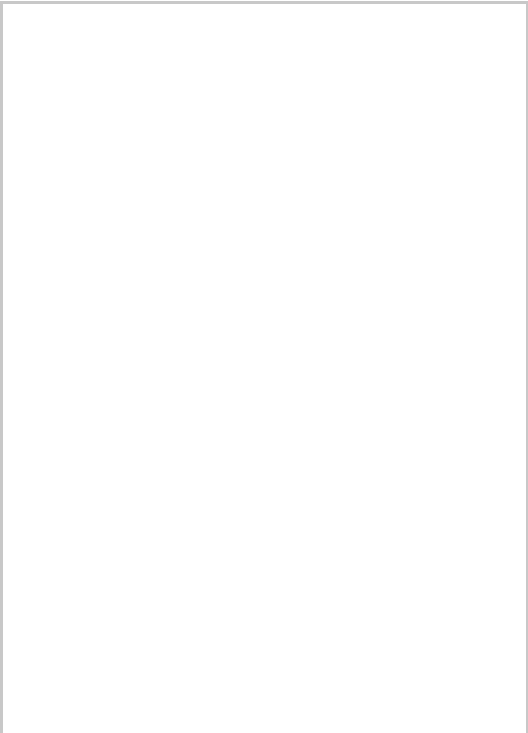
To the rear is an enclosed Mediterranean style paved garden.

This extended home in a sought after location is impeccably presented and Igomove recommend immediate viewing.

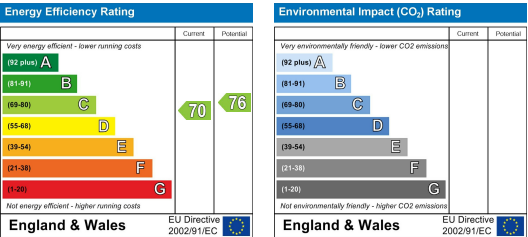
Area Map



Floor Plan



Energy Efficiency Graph



These particulars, whilst believed to be accurate are set out as a general outline only for guidance and do not constitute any part of an offer or contract. Intending purchasers should not rely on them as statements of representation of fact, but must satisfy themselves by inspection or otherwise as to their accuracy. No person in this firms employment has the authority to make or give any representation or warranty in respect of the property.